

COMPACT & POWERPACT SERIES

extreme lightweight
loudspeaker system

 **Trevis**
audio lab



PHILOSOPHY: Art, especially music means freedom. We provide this freedom by neutral sound, infinite transparency and huge performance of our extremel light-weight sound boxes. The products of Trevis Audio Lab are instruments -without limit- of art. Freedom, Art, Music. All this, effortlessly without any help : "The One Man Show"

www.trevisaudio.com
hotline@trevisaudio.com



COMPACT SERIES TA-08

extreme lightweight
fullrange loudspeaker

Trevis
audio lab

SYSTEM SPECIFICATIONS

Frequency Response ¹	68Hz-19kHz ±3dB (45 Hz - 19 kHz ±3dB with TA-15S Subwoofer)
Usable Frequency Range (-6dB) ¹	62Hz - 20kHz (40 Hz - 20 kHz with TP-S115 Subwoofer)
Sensitivity 1W @ 1m ²	96 dB SPL Nominal, 94 dB SPL Wideband
Nominal Peak SPL @ 1m ²	125 dB SPL
HF Dispersion	90° Horizontal x 60° Vertical, rotatable horn
Crossover Frequency ³	2200 Hz passive, with HF protection
Nominal Impedance	8 Ohm
Recommended Amplifiers ⁴	Trevis Audio TAD1004, TAD1504

PRODUCT FEATURES

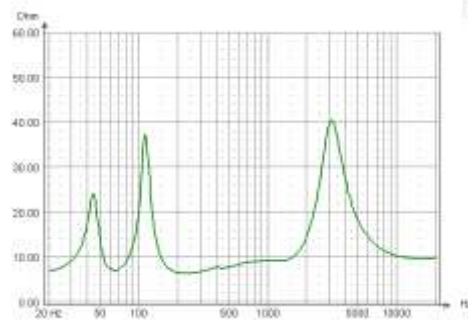
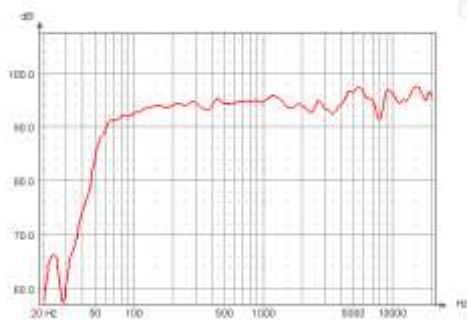
Components: Low Frequency	1 x 8" Neodymium motor 8 Ohm driver 2" (51 mm) voice coil
High Frequency	1 x 1" throat compression driver + low distortion CD horn 1.4" (36 mm) voice coil, Mylar diaphragm, Ferrofluid™ cooling
Connectors	2 x Neutrik SPEAKON™ 4 pole
Construction	Special extreme lightweight plywood cabinet with bracing
Height x Width x Depth	410 x 250 x 280 [mm]
Weight	7.5 kg
Handle	Integral, on top of the cabinet
Cabinet Finish	Textured durable black polyurethane coating
Front finish	AcuFoam™ on perforated steel grille
Stand fittings	Built in Stand Fitting, 35mm (1 3/8"), 12xM8 flying points

PRODUCT FEATURES

- ▶ High power systems with 8", 10" and 12" LF and 1" HF drivers.
- ▶ Ferrofluid® cooled HF drivers with self resettable overload protection.
- ▶ Rotatable 90°x60° constant directivity horn and unique cabinet architecture ensure versatility; user adaptable for both PA and stage monitoring applications.
- ▶ Two-way passive 8 Ohm design uses a single amplifier channel for simple installation and lower cost.
- ▶ Supported with stand mounting and 12 M8 flying points for threaded eye-bolts or brackets.

TA-08 SYSTEM APPLICATIONS

- ▶ Near-field touring, installed PA for clubs, A/V, theater, broadcast, etc.
- ▶ High quality stage monitoring for clubs, A/V, theater, broadcast, etc.
- ▶ Fill-in system in conjunction with larger Trevis Audio systems.



[1] Response curves & data : Anechoic Far Field for the TA loudspeakers with system EQ. Half-Space Anechoic radiation for the TA-S speakers with system EQ.
 [2] Sensitivity & Peak SPL data. Measured with band limited Pink Noise (6dB crest factor). Nominal refers to Voice Decade (300 Hz - 3 kHz), Wideband to the specified ±3dB range. Data are for speaker + processor + recommended amplifier combinations (500Wrms to 8 Ohms).
 [3] Acoustical crossover frequency - at this frequency, the transducers produce equal sound pressure levels.
 [4] Any other clip-limited power amplifiers can be used which can deliver 200 to 500 Watts into 8 Ohms for 1xTA-08, 400 to 1000 Watts to 4 Ohms for 2xTA-08

www.trevisaudio.com
 hotline@trevisaudio.com



COMPACT SERIES TA-10

extreme lightweight
fullrange loudspeaker

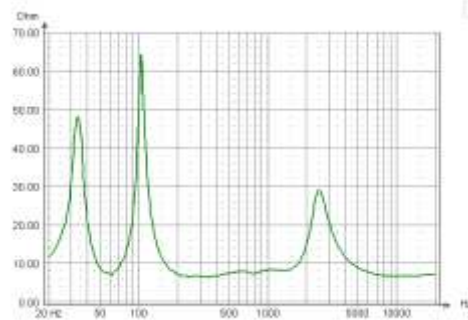
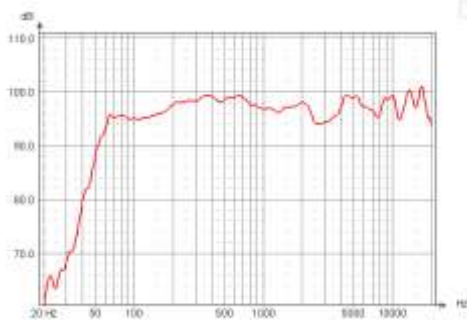
Trevis
audio lab

SYSTEM SPECIFICATIONS

Frequency Response ¹	65Hz-19kHz ±3dB (45 Hz - 19 kHz ±3dB with TA-15S Subwoofer)
Usable Frequency Range (-6dB) ¹	60Hz - 20kHz (40 Hz - 20 kHz with TP-S115 Subwoofer)
Sensitivity 1W @ 1m ²	98 dB SPL Nominal, 96 dB SPL Wideband
Nominal Peak SPL @ 1m ²	127 dB SPL
HF Dispersion	90° Horizontal x 60° Vertical, rotatable horn
Crossover Frequency ³	2100 Hz passive, with HF protection
Nominal Impedance	8 Ohm
Recommended Amplifiers ⁴	Trevis Audio TAD1004, TAD1504

PRODUCT FEATURES

Components: Low Frequency	1 x 10" Neodymium motor 8 Ohm driver 2.5" (64 mm) voice coil
High Frequency	1 x 1" throat compression driver + low distortion CD horn 1.4" (36 mm) voice coil, Mylar diaphragm, Ferrofluid™ cooling
Connectors	2 x Neutrik SPEAKON™ 4 pole
Construction	Special extreme lightweight plywood cabinet with bracing
Height x Width x Depth	470 x 310 x 320 [mm]
Weight	9 kg
Handle	Integral, on top of the cabinet
Cabinet Finish	Textured durable black polyurethane coating
Front finish	AcuFoam™ on perforated steel grille
Stand fittings	Built in Stand Fitting, 35mm (1 3/8"), 12xM8 flying points



[1] Response curves & data : Anechoic Far Field for the TA loudspeakers with system EQ. Half-Space Anechoic radiation for the TA-S speakers with system EQ.
 [2] Sensitivity & Peak SPL data. Measured with band limited Pink Noise (6dB crest factor). Nominal refers to Voice Decade (300 Hz - 3 kHz), Wideband to the specified ±3dB range. Data are for speaker + processor + recommended amplifier combinations (500Wrms to 8 Ohms).
 [3] Acoustical crossover frequency - at this frequency, the transducers produce equal sound pressure levels.
 [4] Any other clip-limited power amplifiers can be used which can deliver 200 to 500 Watts into 8 Ohms for 1xTA-10, 400 to 1000 Watts to 4 Ohms for 2xTA-10

PRODUCT FEATURES

- ▶ High power systems with 8", 10" and 12" LF and 1" HF drivers.
- ▶ Ferrofluid® cooled HF drivers with self resettable overload protection.
- ▶ Rotatable 90°x60° constant directivity horn and unique cabinet architecture ensure versatility; user adaptable for both PA and stage monitoring applications.
- ▶ Two-way passive 8 Ohm design uses a single amplifier channel for simple installation and lower cost.
- ▶ Supported with stand mounting and 12 M8 flying points for threaded eye-bolts or brackets.

TA-10 SYSTEM APPLICATIONS

- ▶ Near-field touring, installed PA for clubs, A/V, theater, broadcast, etc.
- ▶ High quality stage monitoring for clubs, A/V, theater, broadcast, etc.
- ▶ Fill-in system in conjunction with larger Trevis Audio systems.

www.trevisaudio.com
 hotline@trevisaudio.com



COMPACT SERIES TA-12

extreme lightweight
fullrange loudspeaker

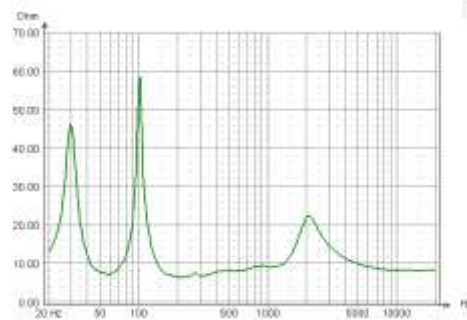
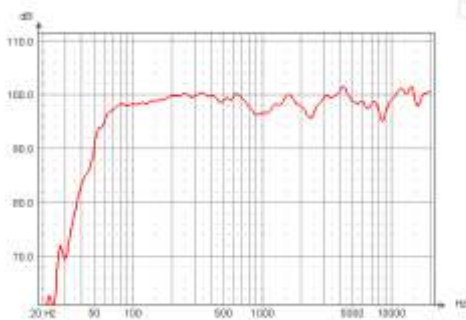
Trevis
audio lab

SYSTEM SPECIFICATIONS

Frequency Response ¹	62Hz-20kHz ±3dB (45 Hz - 20 kHz ±3dB with TA-15S Subwoofer)
Usable Frequency Range (-6dB) ¹	58Hz - 21kHz (40 Hz - 21 kHz with TP-S115 Subwoofer)
Sensitivity 1W @ 1m ²	99 dB SPL Nominal, 97.5 dB SPL Wideband
Nominal Peak SPL @ 1m ²	129 dB SPL
HF Dispersion	90° Horizontal x 60° Vertical, rotatable horn
Crossover Frequency ³	1700 Hz passive, with HF protection
Nominal Impedance	8 Ohm
Recommended Amplifiers ⁴	Trevis Audio TAD1004, TAD1504

PRODUCT FEATURES

Components: Low Frequency	1 x 12" Neodymium motor 8 Ohm driver 2.5" (64 mm) voice coil
High Frequency	1 x 1" throat compression driver + low distortion CD horn 1.7" (44 mm) voice coil, polyimide diaphragm, Ferrofluid™ cooling
Connectors	2 x Neutrik SPEAKON™ 4 pole
Construction	Special extreme lightweight plywood cabinet with bracing
Height x Width x Depth	560 x 400 x 360 [mm]
Weight	10.5 kg
Handle	Integral, on top of the cabinet
Cabinet Finish	Textured durable black polyurethane coating
Front finish	AcuFoam™ on perforated steel grille
Stand fittings	Built in Stand Fitting, 35mm (1 3/8"), 12xM8 flying points



[1] Response curves & data : Anechoic Far Field for the TA loudspeakers with system EQ. Half-Space Anechoic radiation for the TA-S speakers with system EQ.

[2] Sensitivity & Peak SPL data. Measured with band limited Pink Noise (6dB crest factor). Nominal refers to Voice Decade (300 Hz - 3 kHz), Wideband to the specified ±3dB range. Data are for speaker + processor + recommended amplifier combinations (500Wrms to 8 Ohms).

[3] Acoustical crossover frequency - at this frequency, the transducers produce equal sound pressure levels.

[4] Any other clip-limited power amplifiers can be used which can deliver 200 to 500 Watts into 8 Ohms for 1xTA-12, 400 to 1000 Watts to 4 Ohms for 2xTA-12

PRODUCT FEATURES

- ▶ High power systems with 8", 10" and 12" LF and 1" HF drivers.
- ▶ Ferrofluid® cooled HF drivers with self resettable overload protection.
- ▶ Rotatable 90°x60° constant directivity horn and unique cabinet architecture ensure versatility; user adaptable for both PA and stage monitoring applications.
- ▶ Two-way passive 8 Ohm design uses a single amplifier channel for simple installation and lower cost.
- ▶ Supported with stand mounting and 12 M8 flying points for threaded eye-bolts or brackets.

TA-12 SYSTEM APPLICATIONS

- ▶ Near-field touring, installed PA for clubs, A/V, theater, broadcast, etc.
- ▶ High quality stage monitoring for clubs, A/V, theater, broadcast, etc.
- ▶ Fill-in system in conjunction with larger Trevis Audio systems.

www.trevisaudio.com
hotline@trevisaudio.com



COMPACT SERIES TA-15

extreme lightweight
fullrange loudspeaker

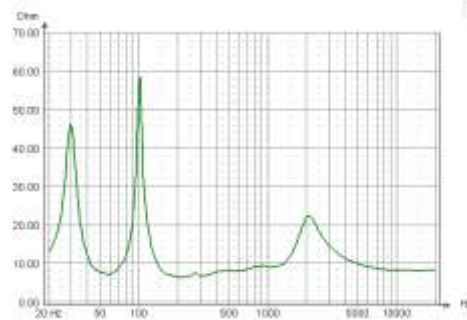
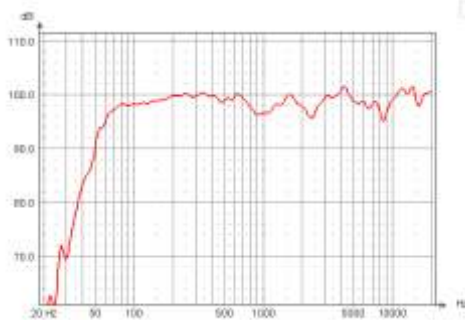
Trevis
audio lab

SYSTEM SPECIFICATIONS

Frequency Response ¹	58Hz-19kHz ±3dB (35 Hz - 19kHz ±3dB with TA-18S Subwoofer)
Usable Frequency Range (-6dB) ¹	55Hz - 20kHz (35 Hz - 20 kHz with TP-S118 Subwoofer)
Sensitivity 1W @ 1m ²	99.5 dB SPL Nominal, 98 dB SPL Wideband
Nominal Peak SPL @ 1m ²	132 dB SPL
HF Dispersion	90° Horizontal x 40° Vertical, rotatable horn
Crossover Frequency ³	1300 Hz passive, with HF protection
Nominal Impedance	8 Ohm
Recommended Amplifiers ⁴	Trevis Audio TAD1504, TAD2008

PRODUCT FEATURES

Components: Low Frequency	1 x 15" Neodymium motor 8 Ohm driver 3" (76 mm) voice coil
High Frequency	1 x 1.4" throat compression driver + low distortion CD horn 2.5" (65 mm) voice coil, Titanium diaphragm
Connectors	2 x Neutrik SPEAKON™ 4 pole
Construction	Special extreme lightweight plywood cabinet with bracing
Height x Width x Depth	680 x 430 x 395 [mm]
Weight	17 kg
Handle	Integral, on top and on both sides of the cabinet
Cabinet Finish	Textured durable black polyurethane coating
Front finish	AcuFoam™ on perforated steel grille
Stand fittings	Built in Stand Fitting, 35mm (1 3/8"), 12xM8 flying points



PRODUCT FEATURES

- ▶ High power full-range loudspeaker with 15" woofer and 1.4" HF driver.
- ▶ Rotatable 90°x40° constant directivity horn and unique cabinet architecture ensure versatility; user adaptable for both PA and stage monitoring applications.

- ▶ Two-way passive 8 Ohm design uses a single amplifier channel for simpler installation and lower cost.

- ▶ Supported with stand mounting and 12 M8 flying points for threaded eye-bolts or brackets.

TA-15 SYSTEM APPLICATIONS

- ▶ Near-field touring, installed PA for clubs, A/V, theater, broadcast, etc.

- ▶ High quality, high power stage monitoring for clubs, A/V, theater, broadcast, etc.

- ▶ Fill-in system in conjunction with larger Trevis Audio systems.

[1] Response curves & data : Anechoic Far Field for the TA loudspeakers with system EQ. Half-Space Anechoic radiation for the TA-S speakers with system EQ.
 [2] Sensitivity & Peak SPL data. Measured with band limited Pink Noise (6dB crest factor). Nominal refers to Voice Decade (300 Hz - 3 kHz), Wideband to the specified ±3dB range. Data are for speaker + processor + recommended amplifier combinations (700Wrms to 8 Ohms).
 [3] Acoustical crossover frequency - at this frequency, the transducers produce equal sound pressure levels.
 [4] Any other clip-limited power amplifiers can be used which can deliver 350 to 800 Watts into 8 Ohms for 1xTA-15, 700 to 1600 Watts to 4 Ohms for 2xTA-15



COMPACT SERIES TA-15S

extreme lightweight
Subbass extension for
COMPACT speakers

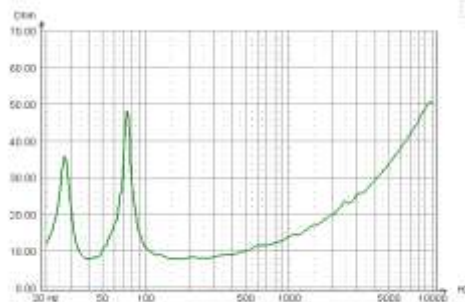
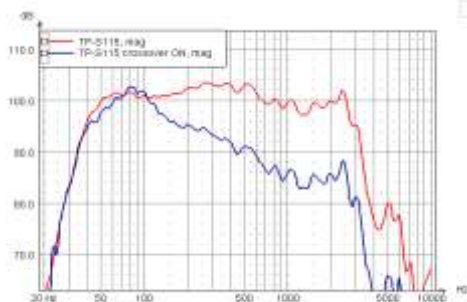
Trevis
audio lab

SYSTEM SPECIFICATIONS

Frequency Response ¹	45 Hz - 2000 Hz ±3dB
Usable Frequency Range (-6dB) ¹	40 Hz - 2000 Hz
Sensitivity 1W @ 1m ²	97 dB SPL
Nominal Peak SPL @ 1m ²	129 dB SPL
Crossover Frequency	250 Hz passive (can be bypassed with switch on connector panel)
Crossover Output	250 Hz passive highpass-filter (see system operation)
Nominal Impedance	8 Ohm
Recommended Amplifiers ³	Trevis Audio TAD 2008

PRODUCT FEATURES

Components: Low Frequency	1 x 15" Neodymium motor 8 Ohm driver 3" (76 mm) voice coil
Connectors	2 x Neutrik SPEAKON™ 4 pole
System Operation	2+, 2- terminal on 4 pole SPEAKON™ is the passive high-pass filtered output for TA full-range loudspeakers to combine TA-15S and TA-08 (or TA-10) speakers as a passive satellite system, which can be easily driven from a single amplifier channel giving the user a very simple and cost effective way to create a high quality extended range loudspeaker system
Construction	Special extreme lightweight plywood cabinet with bracing
Height x Width x Depth	640 x 430 x 540 [mm]
Weight	17 kg
Handle	Integral, on both sides of the cabinet
Cabinet Finish	Textured durable black polyurethane coating
Front finish	AcuFoam™ on perforated steel grille
Stand fittings	Built in Stand Fitting on top, 35mm (1 3/8), flying points (optional)



[1] Response curves & data : Anechoic Far Field for the TA loudspeakers with system EQ. Half-Space Anechoic radiation for the TA-S speakers with system EQ.

[2] Sensitivity & Peak SPL data. Measured with band limited Pink Noise (6dB crest factor). Data are for speaker + processor + recommended amplifier combinations (700 Wrms to 8 Ohms).

[3] Any other clip-limited power amplifiers can be used which can deliver 500 to 800 Watts into 8 Ohms for 1xTA-15S, 1000 to 1600 Watts to 4 Ohms for 2xTA-15S

PRODUCT FEATURES

- ▶ High power bass extension with 15" LF driver for TA range speakers.
- ▶ Easy set up and cabling
- ▶ Built in bypassable passive low-pass filter and passive high-passed output for TA-08 or TA-10 speakers
- ▶ Supported with stand mounting and optional flying accessories.

TA-15S SYSTEM APPLICATIONS

- ▶ High power touring, installed PA for clubs, A/V, theater, broadcast, etc.
- ▶ High quality , high power stage monitoring for clubs, A/V, theater, broadcast, etc.
- ▶ Fill-in system in conjunction with larger Trevis Audio systems.

www.trevisaudio.com
hotline@trevisaudio.com



COMPACT SERIES TA-18S

extreme lightweight
Subbass extension for
COMPACT speakers

Trevis
audio lab

SYSTEM SPECIFICATIONS

Frequency Response ¹	38 Hz - 1000 Hz ±3dB
Usable Frequency Range (-6dB) ¹	35 Hz - 1000 Hz
Sensitivity 1W @ 1m ²	98 dB SPL
Nominal Peak SPL @ 1m ²	132 dB SPL
Recommended Crossover Freq.	100Hz - 150Hz
Crossover Output	-
Nominal Impedance	8 Ohm
Recommended Amplifiers ³	Trevis Audio TAD 2008, TAD1504 (-bridged mono operation)

PRODUCT FEATURES

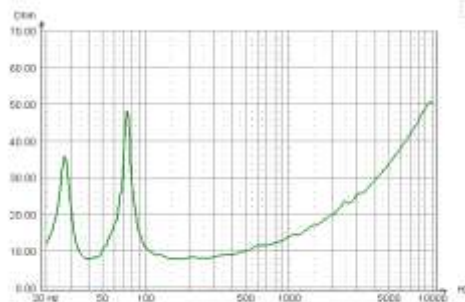
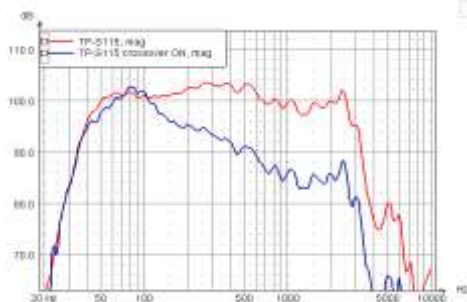
Components: Low Frequency	1 x 18" Neodymium motor 8 Ohm driver 4" (102 mm) voice coil
Connectors	2 x Neutrik SPEAKON™ 4 pole
Construction	Special extreme lightweight plywood cabinet with bracing
Height x Width x Depth	700 x 510 x 630 [mm]
Weight	26 kg
Handle	Integral, on both sides of the cabinet
Cabinet Finish	Textured durable black polyurethane coating
Front finish	AcuFoam™ on perforated steel grille
Stand fittings	Built in Stand Fitting on top, 35mm (1"3/8), flying points (optional)

PRODUCT FEATURES

- ▶ High power sub-bass extension with 18" LF driver for TA range speakers.
- ▶ Supported with stand mounting and optional flying accessories.

TA-115S SYSTEM APPLICATIONS

- ▶ High power touring, installed PA for clubs, A/V, theater, broadcast, etc.
- ▶ High quality, high power stage monitoring for clubs, A/V, theater, broadcast, etc.



[1] Response curves & data : Anechoic Far Field for the TA loudspeakers with system EQ. Half-Space Anechoic radiation for the TA-S speakers with system EQ.

[2] Sensitivity & Peak SPL data. Measured with band limited Pink Noise (6dB crest factor). Data are for speaker + processor + recommended amplifier combinations (1500 Wrms to 8 Ohms).

[3] Any other clip-limited power amplifiers can be used which can deliver 800 to 1500 Watts into 8 Ohms for 1xTA18S, 1600 to 3000 Watts to 4 Ohms for 2xTA-18S



POWERPACT SERIES TA-08P

extreme lightweight
loudspeaker system

Trevis
audio lab

PRODUCT FEATURES

- ▶ High power system with 8" LF and 1" HF drivers.
- ▶ Ferrofluid® cooled HF drivers with rotatable 90°x60° constant directivity horn and unique cabinet architecture ensures versatility; user adaptable for both PA and stage monitoring applications.

▶ Self powered, built in Class D amplification for more sound with less weight and less heat, with the lowest average power consumption - minimal stress on mains network.

▶ Bi-amplified for the highest sound quality. Superior sound quality 24bit / 48kHz DSP combined with digital amplification ensures natural and clear sound, and maximum driver protection.

▶ Supported with stand mounting and M8 flying points for threaded eye-bolts or brackets.

TA-08P SYSTEM APPLICATIONS

▶ Near-field touring, installed PA for clubs, A/V, theater, broadcast or high power studio monitoring etc.

▶ High quality stage monitoring for clubs, A/V, theater, broadcast, etc.

▶ Fill-in system in conjunction with larger Trevis Audio systems.

SYSTEM SPECIFICATIONS

Frequency Response ¹	65Hz-19kHz ±3dB (Fill preset)
Usable Frequency Range (-6dB) ¹	60Hz - 20kHz (Fill preset)
Max. SPL levels @ 1m ²	115 dB SPL (continuous) 121dB SPL(peak) (Fill preset)
Nominal Coverage (-6dB)	90° Horizontal x 60° Vertical, rotatable HF horn
Crossover Frequency ³	2000 Hz bi-amped, DSP processed
Signal Processing	24 bit/48 kHz, 4 user selectable presets: Front, Fill, Monitor, X-Over
Input Impedance	10 kOhm, balanced, XLRf input conn., XLRM loop out conn.
Amplifier Rated Power (EIAJ)	2 channel Class D amplifier with SMPS, LF: 350W, HF:180W
Mains Input & Connectors	IEC power input socket
Power Requirement	Nominal: 1 A _{rms} , Peak maximum current draw 3.15 A _{rms} (@230V)

PRODUCT FEATURES

Components: Low Frequency	1 x 8" High power Neodymium motor driver, 2" (51 mm) voice coil
High Frequency	1 x 1" (25mm) throat compression driver + low distortion CD horn
	1.4" (36 mm) voice coil, mylar diaphragm, Ferrofluid™ cooling
Construction	Special extreme lightweight plywood cabinet with bracing
Height x Width x Depth	410 x 250 x 280 [mm]
Weight	7.7 kg
Handle	Integral, on top of the cabinet
Cabinet Finish	Textured durable black polyurethane coating
Front finish	AcuFoam™ on perforated steel grille
Stand fittings	Built in Stand Fitting, 35mm (1"3/8), 12xM8 flying points

[1] Response curves & data : Anechoic Far Field for the full-range speakers, and Half-Space Anechoic radiation for the sub-bass speakers.

[2] Sensitivity & Peak SPL data: Measured with band limited pink noise (6dB crest factor).

[3] Acoustical crossover frequency - at this frequency, the transducers produce equal sound pressure levels.

www.trevisaudio.com
hotline@trevisaudio.com



POWERPACT SERIES TA-12P

extreme lightweight
loudspeaker system

Trevis
audio lab

PRODUCT FEATURES

- ▶ High power system with 12" LF and 1" HF drivers.
- ▶ Ferrofluid® cooled HF drivers with rotatable 90°x60° constant directivity horn and unique cabinet architecture ensures versatility; user adaptable for both PA and stage monitoring applications.

SYSTEM SPECIFICATIONS

Frequency Response ¹	60Hz-19kHz ±3dB (Fill preset)
Usable Frequency Range (-6dB) ¹	55Hz - 20kHz (Fill preset)
Max. SPL levels @ 1m ²	120 dB SPL (continuous) 126 dB SPL(peak) (Fill preset)
Nominal Coverage (-6dB)	90° Horizontal x 60° Vertical, rotatable HF horn
Crossover Frequency ³	1700 Hz bi-amped, DSP processed
Signal Processing	24 bit/48 kHz, 4 user selectable presets: Front, Fill, Monitor, X-Over
Input Impedance	10 kOhm, balanced, XLRf input conn., XLRM loop out conn.
Amplifier Rated Power (EIAJ)	2 channel Class D amplifier with SMPS, LF: 350W, HF:180W
Mains Input & Connectors	IEC power input socket
Power Requirement	Nominal: 1 A _{rms} , Peak maximum current draw 3.15 A _{rms} (@230V)

PRODUCT FEATURES

Components: Low Frequency	1 x 12" High power Neodymium motor driver, 2.5" (64 mm) voice coil
High Frequency	1 x 1" (25mm) throat compression driver + low distortion CD horn 1.7" (44 mm) voice coil, polyimide diaphragm, Ferrofluid™ cooling
Construction	Special extreme lightweight plywood cabinet with bracing
Height x Width x Depth	560 x 400 x 360 [mm]
Weight	11 kg
Handle	Integral, on top of the cabinet
Cabinet Finish	Textured durable black polyurethane coating
Front finish	AcuFoam™ on perforated steel grille
Stand fittings	Built in Stand Fitting, 35mm (1"3/8), 12xM8 flying points

- ▶ Self powered, built in Class D amplification for more sound with less weight and less heat, with the lowest average power consumption - minimal stress on mains network.

- ▶ Bi-amplified for the highest sound quality. Superior sound quality 24bit / 48kHz DSP combined with digital amplification ensures natural and clear sound, and maximum driver protection.

- ▶ Supported with stand mounting and M8 flying points for threaded eye-bolts or brackets.

TA-12P SYSTEM APPLICATIONS

- ▶ Near-field touring, installed PA for clubs, A/V, theater, broadcast etc.
- ▶ High quality stage monitoring for clubs, A/V, theater, broadcast, etc.
- ▶ Fill-in system in conjunction with larger Trevis Audio systems.

[1] Response curves & data : Anechoic Far Field for the full-range speakers, and Half-Space Anechoic radiation for the sub-bass speakers.

[2] Sensitivity & Peak SPL data: Measured with band limited pink noise (6dB crest factor).

[3] Acoustical crossover frequency - at this frequency, the transducers produce equal sound pressure levels.



POWERPACT SERIES TA-15P

extreme lightweight
loudspeaker system

Trevis
audio lab

PRODUCT FEATURES

- ▶ High power system with 15" LF and 1.4" HF drivers.
- ▶ Ferrofluid® cooled HF drivers with rotatable 90°x40° constant directivity horn and unique cabinet architecture ensures versatility; user adaptable for both PA and stage monitoring applications.

▶ Self powered, built in Class D amplification for more sound with less weight and less heat, with the lowest average power consumption - minimal stress on mains network.

▶ Superior sound quality 24bit / 48kHz DSP combined with 700W digital amplification ensures natural and clear sound, and maximum driver protection.

▶ Supported with stand mounting and M8 flying points for threaded eye-bolts or brackets.

TA-15P SYSTEM APPLICATIONS

▶ Near- to mid-field touring, installed PA for clubs, A/V, theater, broadcast etc.

▶ High power stage monitoring for clubs, A/V, theater, broadcast, etc.

▶ Fill-in system in conjunction with larger Trevis Audio systems.

SYSTEM SPECIFICATIONS

Frequency Response ¹	60Hz-19kHz ±3dB (Fill preset)
Usable Frequency Range (-6dB) ¹	55Hz - 20kHz (Fill preset)
Max. SPL levels @ 1m ²	125 dB SPL (continuous) 131 dB SPL(peak) (Fill preset)
Nominal Coverage (-6dB)	90° Horizontal x 40° Vertical, rotatable HF horn
Crossover Frequency ³	1300 Hz , DSP processed (with passive x-over)
Signal Processing	24 bit/48 kHz, 4 user selectable presets: Front, Fill, Monitor, X-Over
Input Impedance	10 kOhm, balanced, XLRf input conn., XLRM loop out conn.
Amplifier Rated Power (EIAJ)	700W (Bridged) Class D amplifier with SMPS
Mains Input & Connectors	IEC power input socket
Power Requirement	Nominal: 1 A rms, Peak maximum current draw 3.15 A rms (@230V)

PRODUCT FEATURES

Components: Low Frequency	1 x 15" High power Neodymium motor driver, 3" (76 mm) voice coil
High Frequency	1 x 1.4" (36mm) throat compression driver + low distortion CD horn 2.5" (64 mm) voice coil, pure titanium diaphragm, Ferrofluid™ cooling
Construction	Special extreme lightweight plywood cabinet with bracing
Height x Width x Depth	680 x 430 x 395 [mm]
Weight	19 kg
Handle	Integral, on top of the cabinet
Cabinet Finish	Textured durable black polyurethane coating
Front finish	AcuFoam™ on perforated steel grille
Stand fittings	Built in Stand Fitting, 35mm (1"3/8), 12xM8 flying points

[1] Response curves & data : Anechoic Far Field for the full-range speakers, and Half-Space Anechoic radiation for the sub-bass speakers.

[2] Sensitivity & Peak SPL data: Measured with band limited pink noise (6dB crest factor).

[3] Acoustical crossover frequency - at this frequency, the transducers produce equal sound pressure levels.



POWERPACT SERIES TA-12SP

extreme lightweight
loudspeaker system

Trevis
audio lab

PRODUCT FEATURES

- ▶ High power 12" bass extension for TA-P speakers
- ▶ Self powered, built in Class D amplification for more sound with less weight and less heat, with the lowest average power consumption - minimal stress on mains network.
- ▶ Superior sound quality 24bit / 48kHz DSP combined with 700W digital amplification ensures natural and clear sound, and maximum driver protection.

- ▶ Supported with stand mounting

TA-12SP SYSTEM APPLICATIONS

- ▶ Near-field touring, installed PA for clubs, A/V, theater, broadcast or high power studio monitoring etc.
- ▶ High quality stage monitoring for clubs, A/V, theater, broadcast, etc.
- ▶ Fill-in system in conjunction with larger Trevis Audio systems.

SYSTEM SPECIFICATIONS

Frequency Response ¹	42Hz-110Hz ±3dB
Usable Frequency Range (-6dB) ¹	38Hz - 120Hz
Max. SPL levels @ 1m ²	123 dB SPL (continuous) 129 dB SPL(peak)
Nominal Coverage (-6dB)	360° (Omnidirectional)
Presets	User selectable, X-over, Add-Sub, X-O. Card., Add-S. Card.
Signal Processing	24 bit resolution / 48 kHz sampling rate
Input Impedance	10 kOhm, balanced, XLRf input conn., XLRM loop out conn.
Amplifier Rated Power (EIAJ)	700W (Bridged) Class D amplifier with SMPS
Mains Input & Connectors	IEC power input socket
Power Requirement	Nominal: 1 A _{rms} , Peak maximum current draw 3.15 A _{rms} (@230V)

PRODUCT FEATURES

Components: Low Frequency	1 x 12" High power Neodymium motor driver, 3" (76 mm) voice coil
Construction	Hybrid bandpass horn subwoofer Special extreme lightweight plywood cabinet with bracing
Height x Width x Depth	385 x 525 x 610 [mm]
Weight	18 kg
Handle	Integral, on edges
Cabinet Finish	Textured durable black polyurethane coating
Front finish	AcuFoam™ on perforated steel grille
Stand fittings	Built in Stand Fitting, M20 threaded pole mount

[1] Response curves & data : Anechoic Far Field for the full-range speakers, and Half-Space Anechoic radiation for the sub-bass speakers.

[2] Sensitivity & Peak SPL data: Measured with band limited pink noise (6dB crest factor).

[3] Acoustical crossover frequency - at this frequency, the transducers produce equal sound pressure levels.



Hotel bar installation - Budva, Montenegro



Pub installation

Trevis

COLOR of Trevis



Mercedes Hungary - Conference room installation



Task Oriented Development Technology